

Physics Experimental Kit

Mechanics

TECHNIKIT

"A machine, by its working principle, is just a machine...
However, using a machine in harmony with another machine to do
a useful job is all about innovation. With only such systems,
we can serve to develop an innovative way of thinking..."

Ömer Hakan Yalın

Developing since 1978...

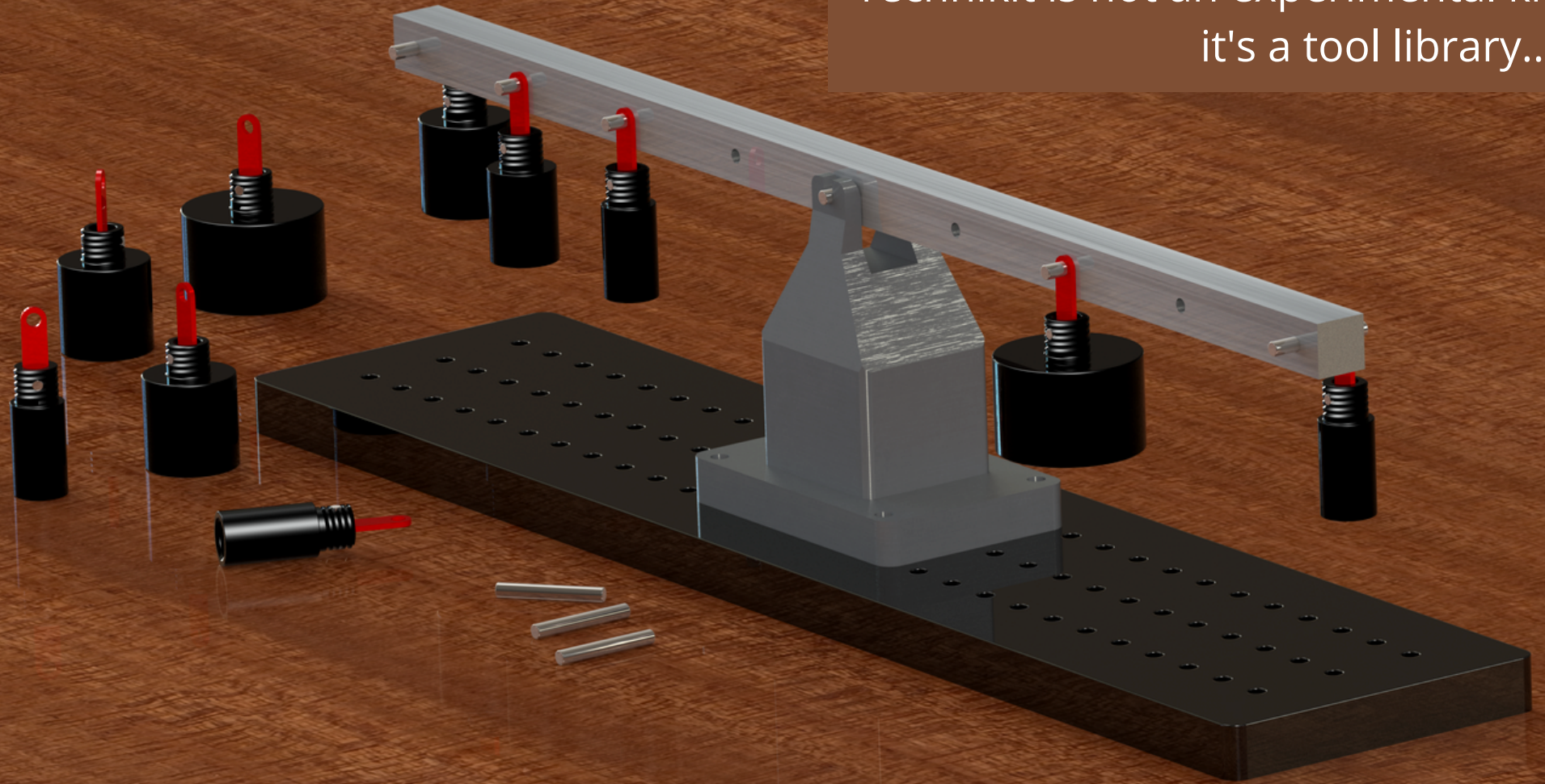
The future will be shaped by individuals who can develop analytical thinking skills, who are able to develop innovative way of thinking, who are able to produce creative solutions to the problems faced and especially who are prone to teamwork.

Technikit designers believe that, a bright future is possible with well-educated generations. Well education can be achieved with well-designed and well-constructed educational materials.

Imagine an experimental kit, that promises users to;

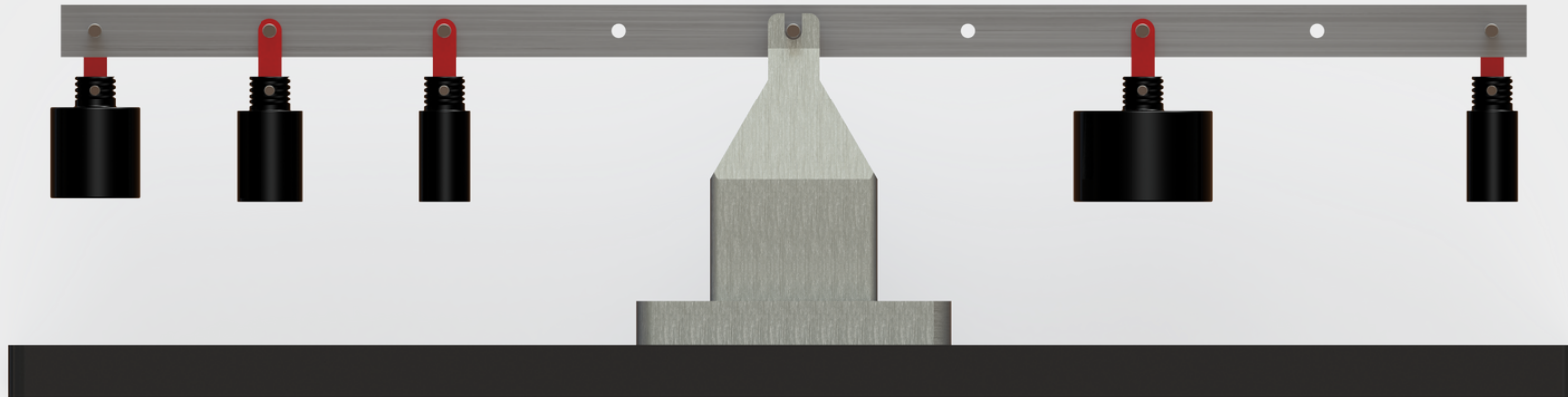
- ▶ Unlimited configuration possibilities thanks to its interactable components,
- ▶ Due to its modular structure, system skills can be developed,
- ▶ Long-lasting use,
- ▶ Completely hygienic surfaces thanks to its anti-allergic paints and coatings,
- ▶ Quick and easy assembling and disassembling

Technikit is not an experimental kit,
it's a tool library....



MOMENT EQUILIBRIUM (LEVER)

It helps to create concepts such as leverage, balance, moment, force arm, and support point. It shows that a rod can be balanced centrifually as well as centrally. It provides space advantage as it uses the same table and weights with the other components of the tool library. It can easily be interacted with other system elements.



PULLEYS

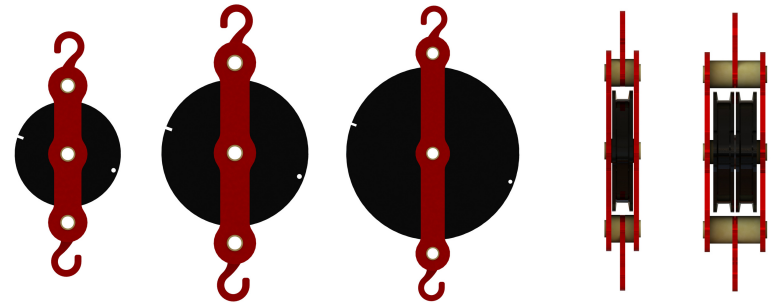
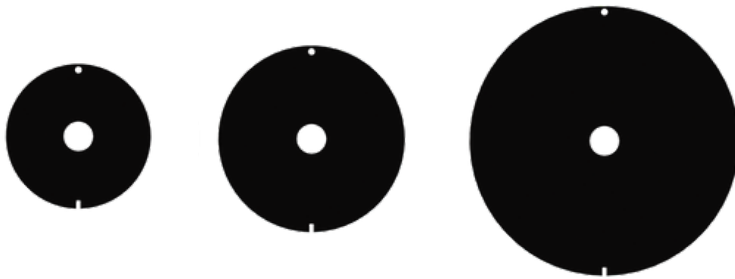
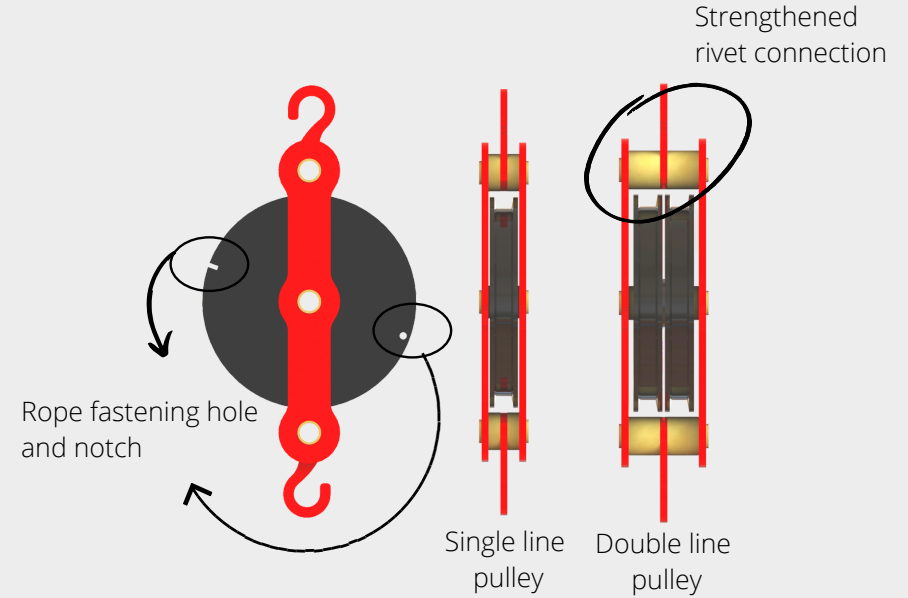
Multiple usage possibilities with rich pin count

Wide variety of pulleys

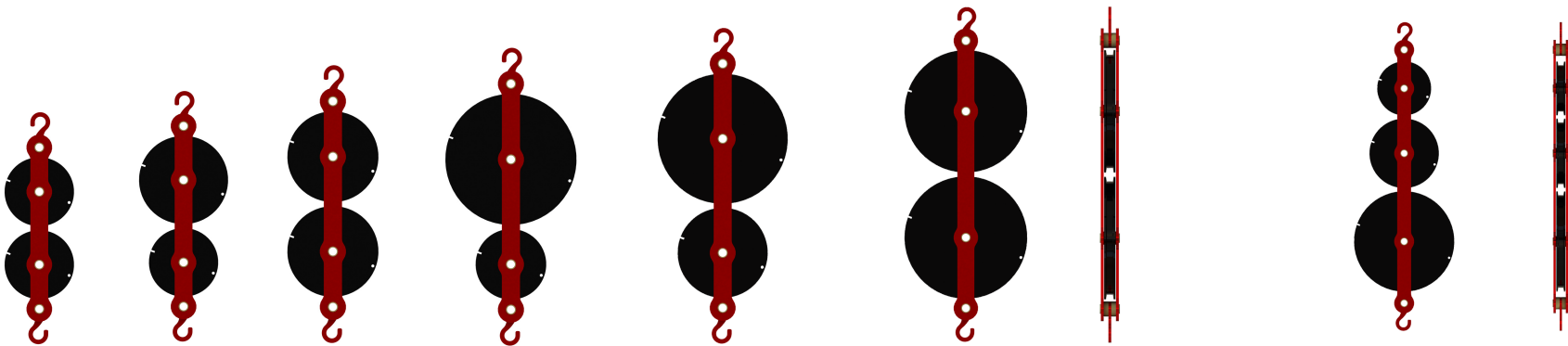
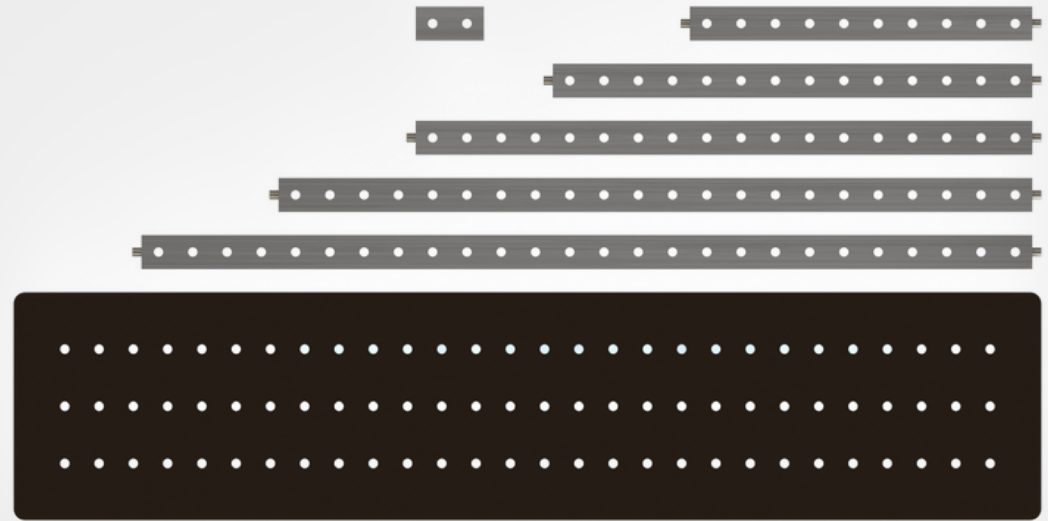
Weights that can be added together

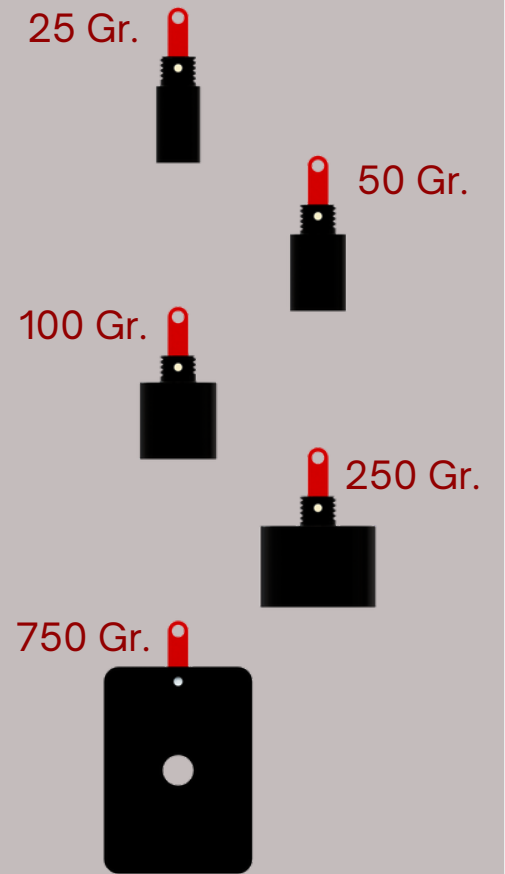
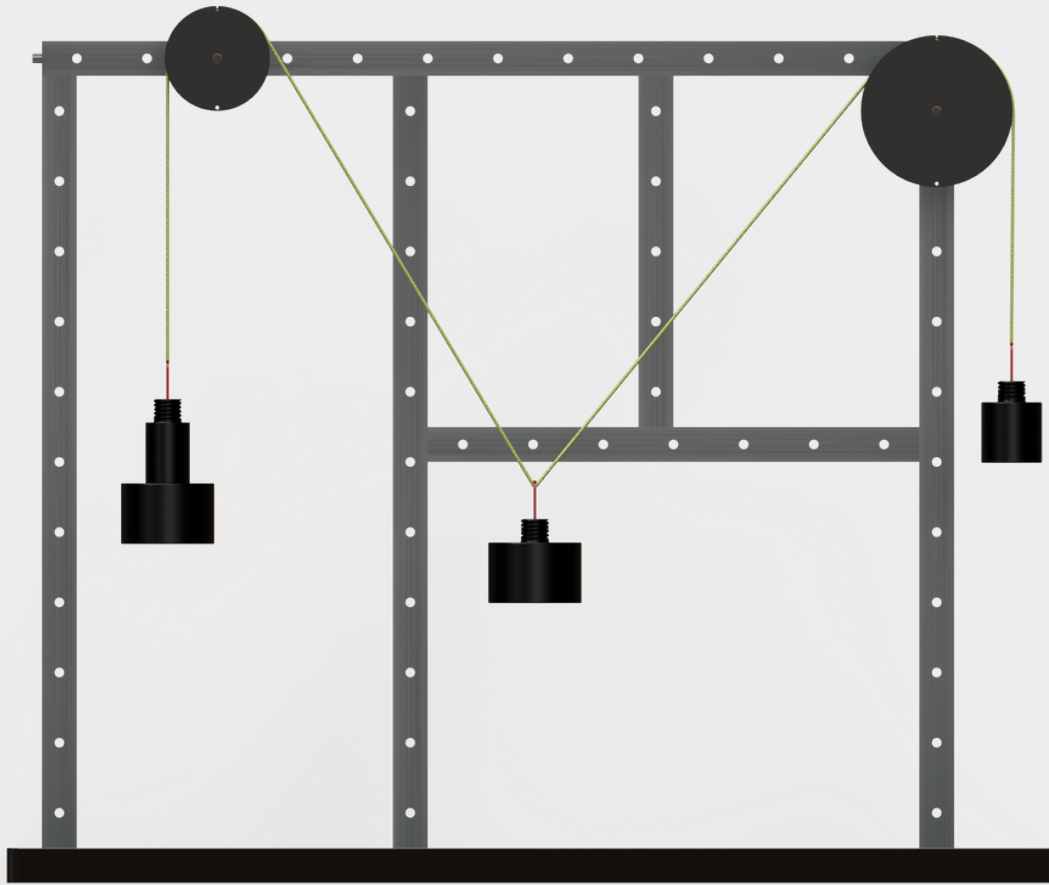
Easy to hang, mount, assemble and disassemble.

Supports in teaching concepts such as pulleys, load balance and weights.

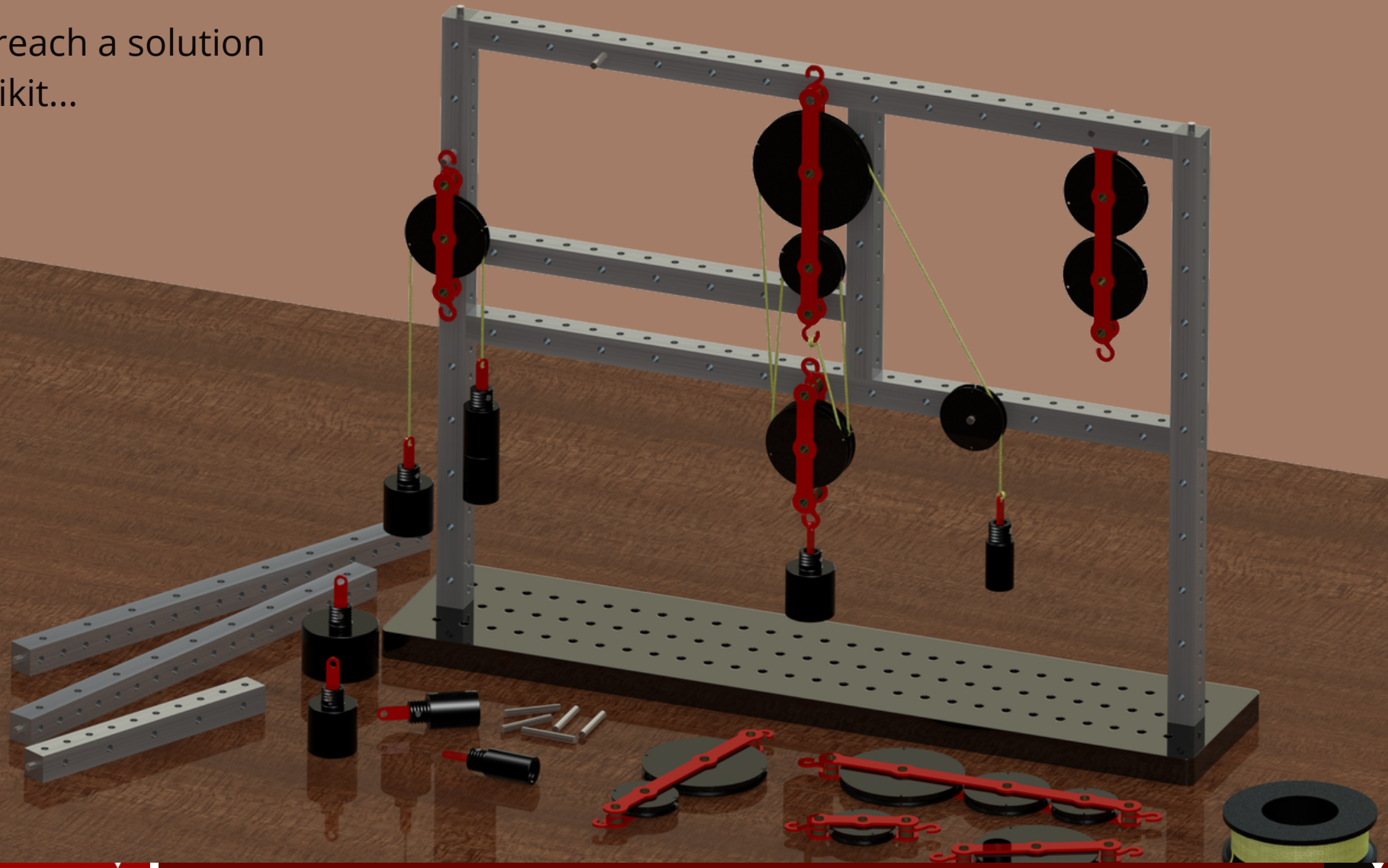


There are 50+ experimental sheets prepared in accordance with the curriculum.

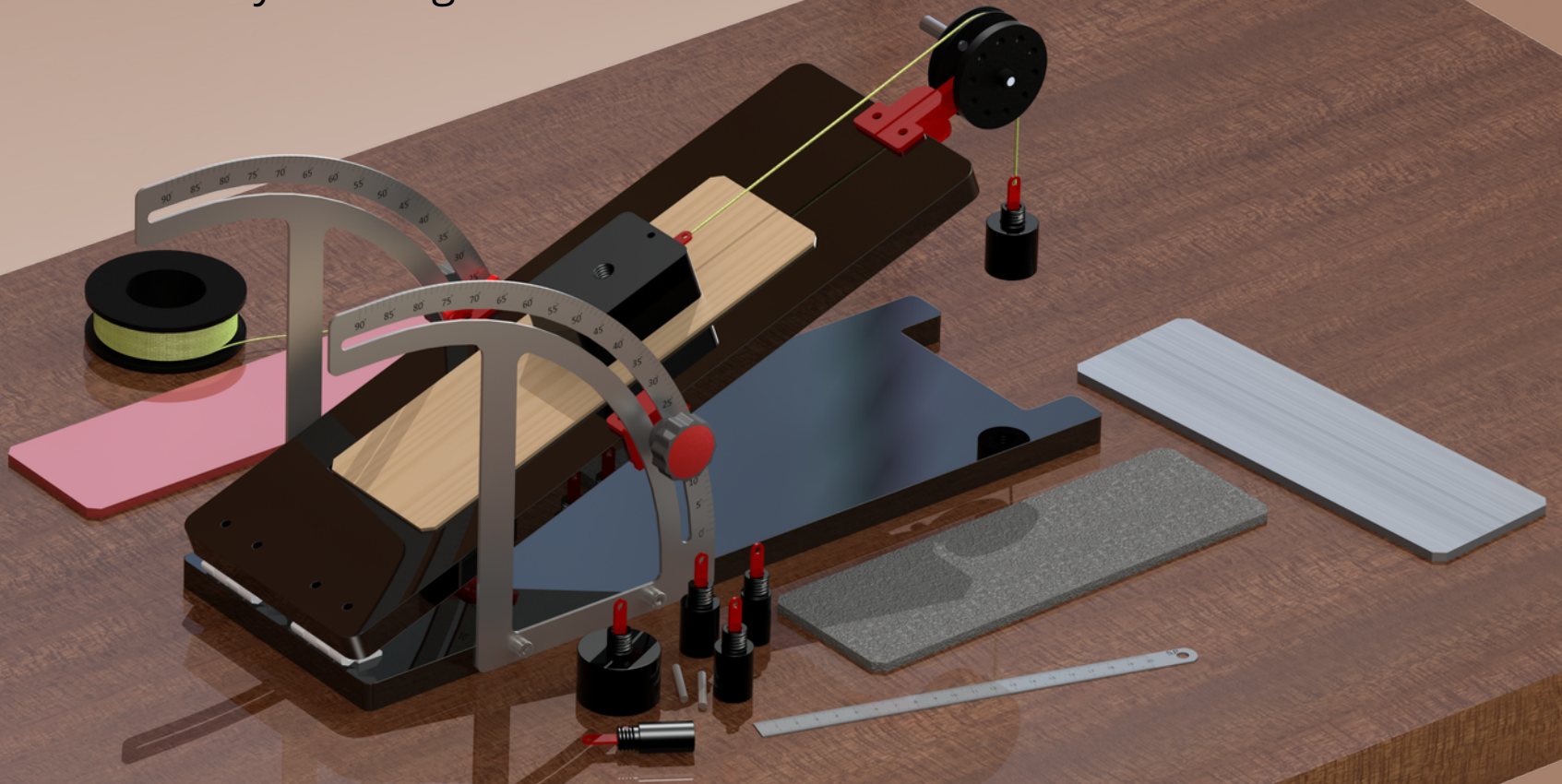




It is fun to reach a solution
with Technikit...



Technikit supports discovery learning...



INCLINED PLANE

Helps to form concepts such as lever, balance, moment, force arm, and point of support.

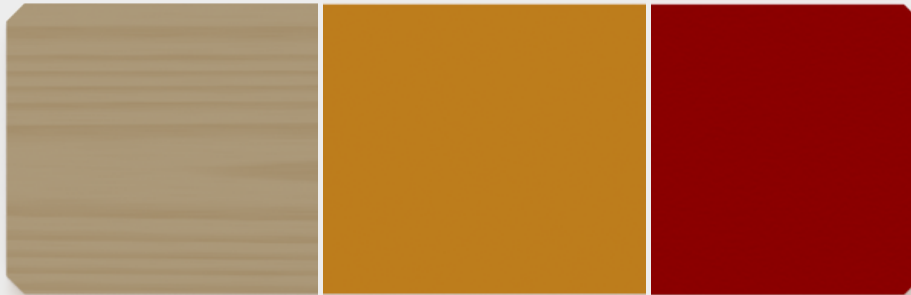
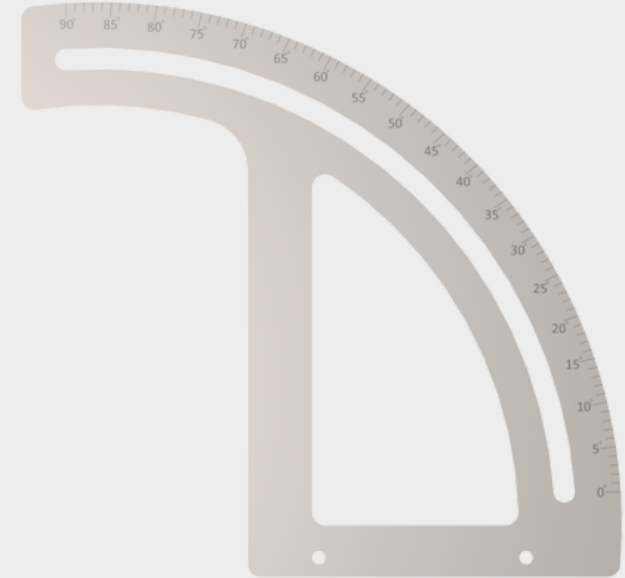
Provides angular positioning between 0 - 90 degrees.

Offers use with different friction surfaces.

Takes advantage of space as it uses same table as suspension assemblies and weights.

Can also be used for free fall experiments.

Can be used in integration with other system elements.



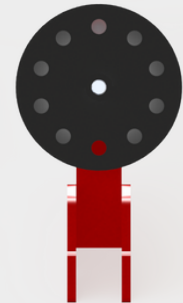
Polished wood

Non-polished wood

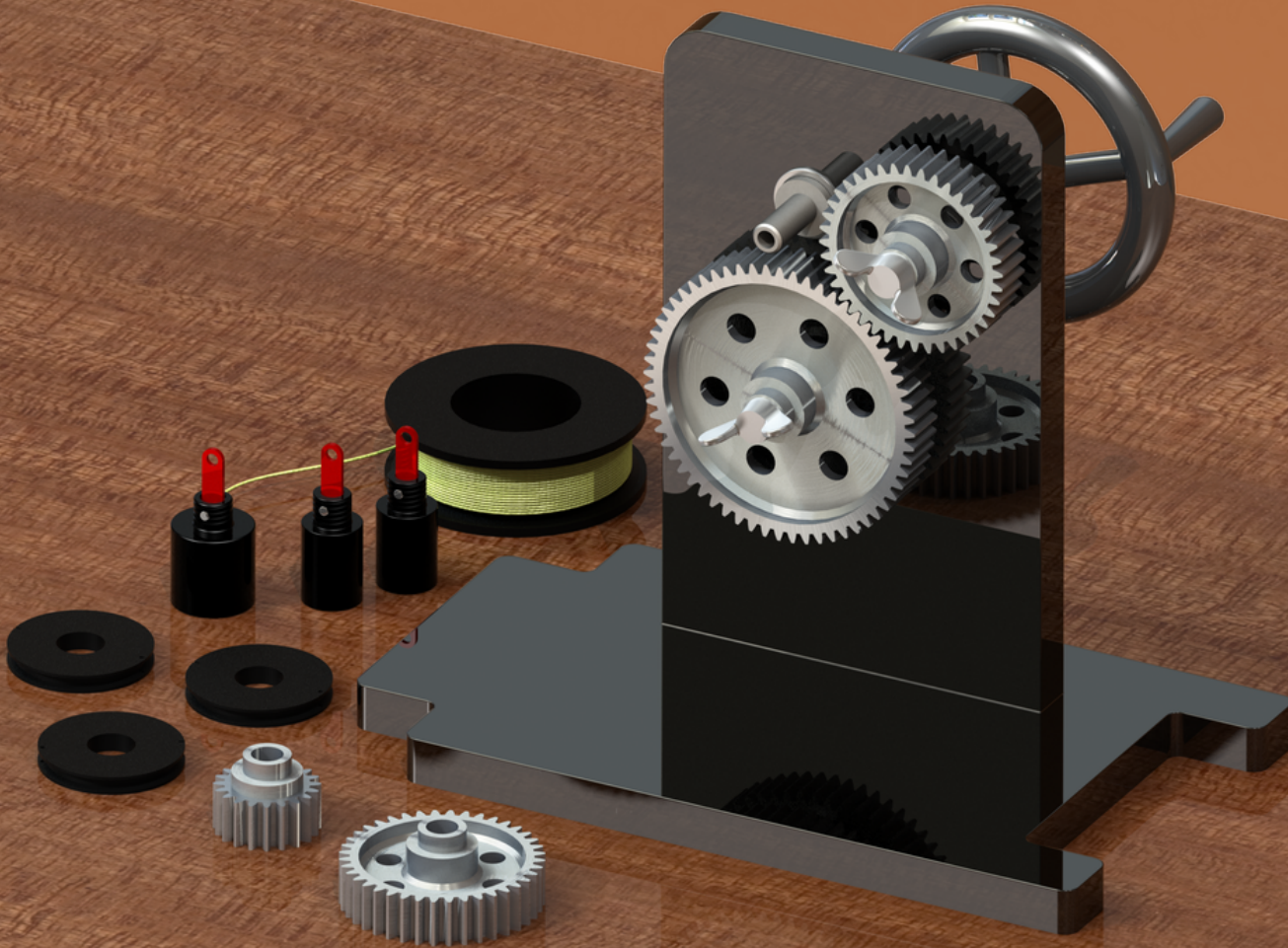
Soft rubber

Tough rubber

Plexiglass



Technikit, supports
critical and creative way
of thinking.



GEAR WHEEL

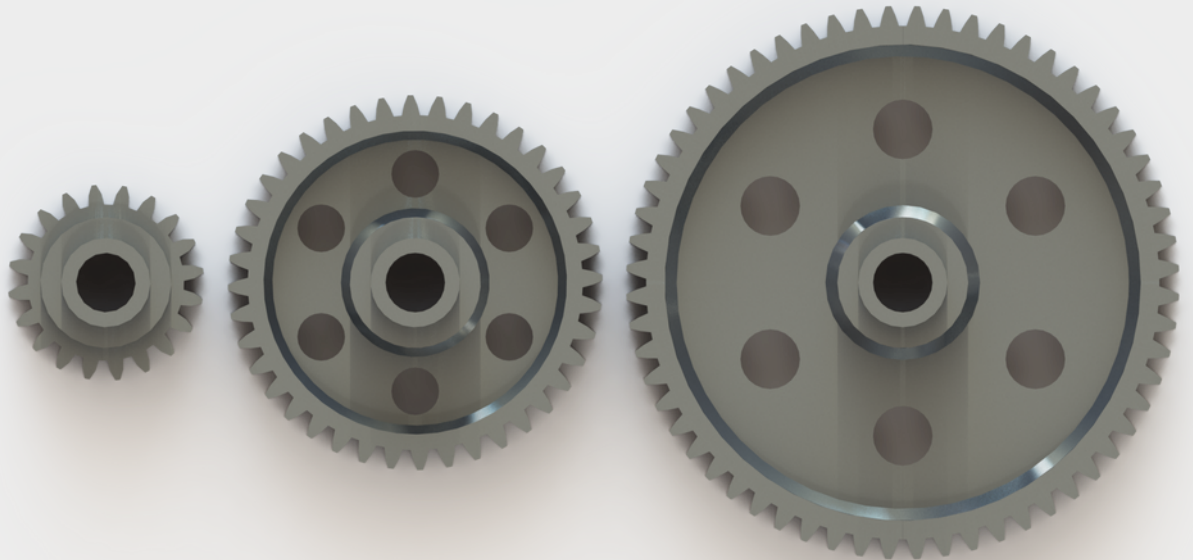
Allows studying concepts such as pinion gear, gear, gear ratio, direction of rotation.

1, 1.5, 2 and 3 gear ratios and auto blockage can be shown.

Rotation directions and rotation amounts can be displayed with indicators that can be attached on the gears.

Thanks to shaft bearings with identical geometry, flywheel and the rollers are interchangeable.

Can be interacted with belt pulleys.



Technikit supports kinesthetic learning,
brings fine motor abilities in.



BELT - PULLEY

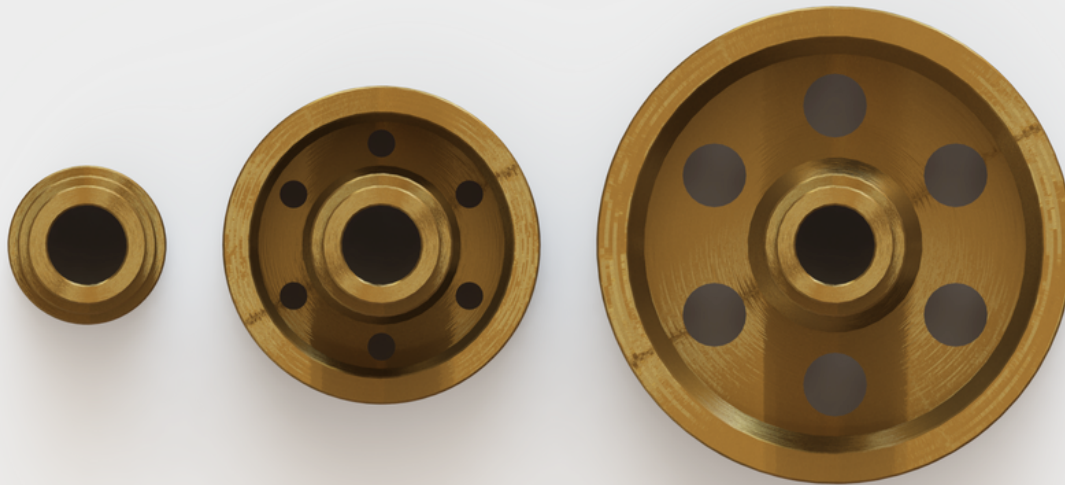
Allows to study concepts such as belt, pulley, pulley ratio, direction of rotation, rotation rate.

1, 1.5, 2 and 3 gear ratios can be shown.

Rotation directions and rotation amounts can be displayed with indicators that can be attached on the gears.

Thanks to shaft bearings with identical geometry, flywheel and the rollers are interchangeable.

Can be interacted with gears.



SPRINGS

Consist of 3 different springs which are composed of X, 2X, 3X spring coefficients.

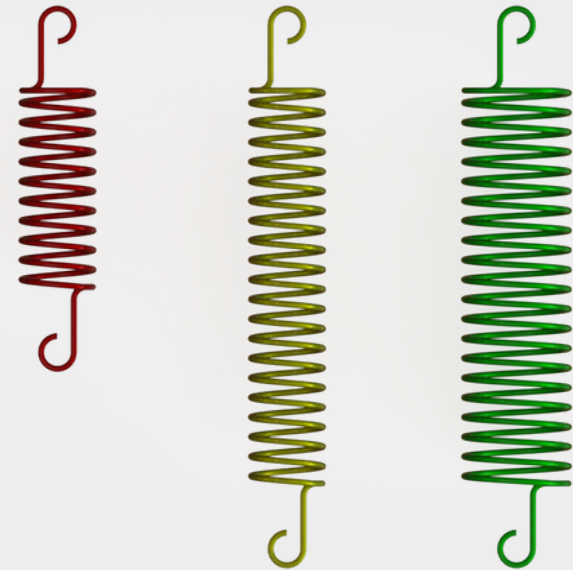
Are colored according to their hardness. (Red is the hardest)

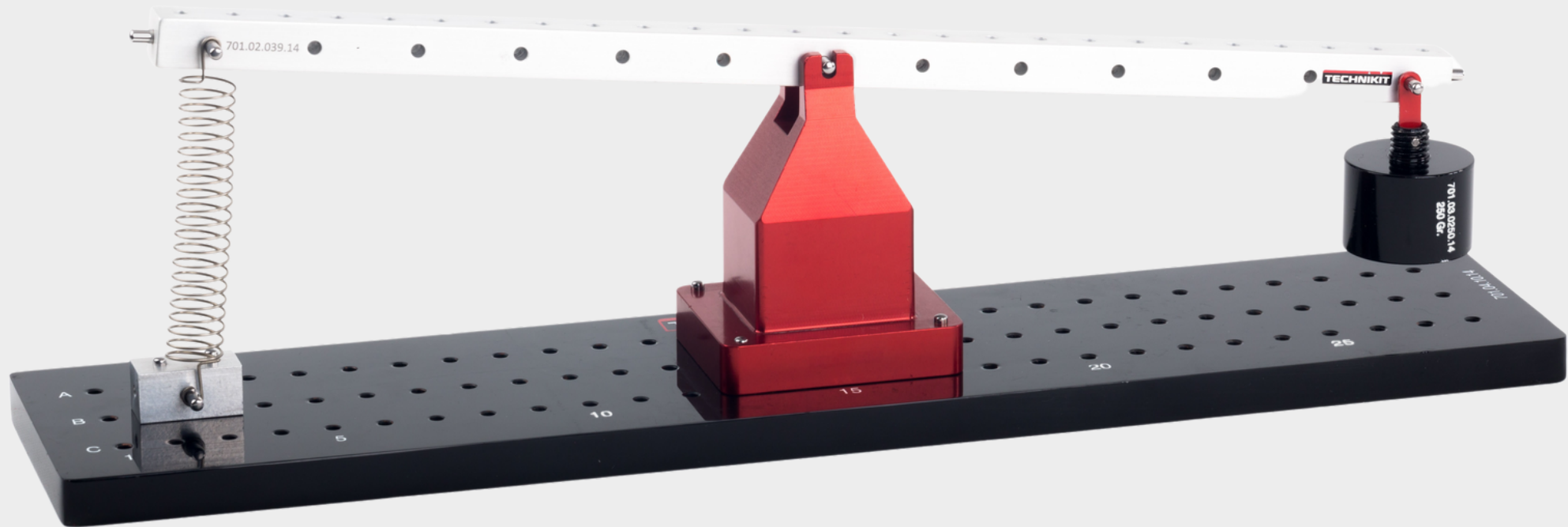
Help to clarify the concepts such as Elasticity, Hooke's Law, Spring Coefficient.

Thanks to its' modular design, can be easily interacted with other components of the tool library.

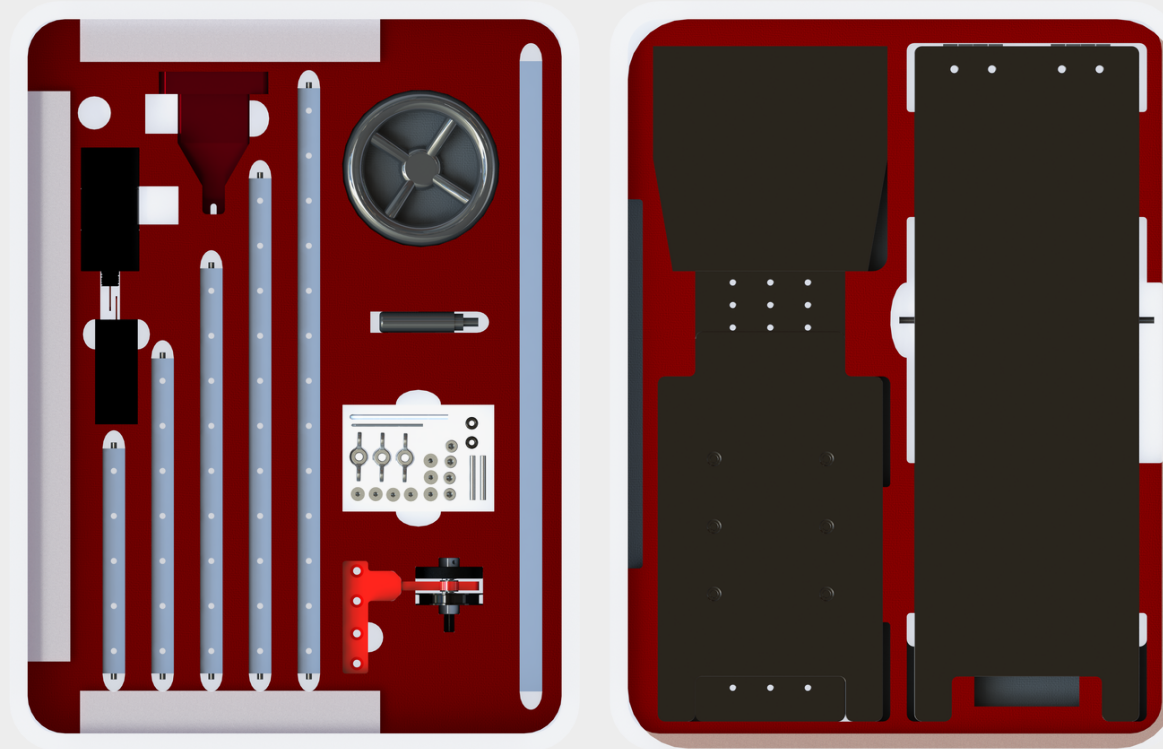
Can be mounted as serial and/or parallel to each other.

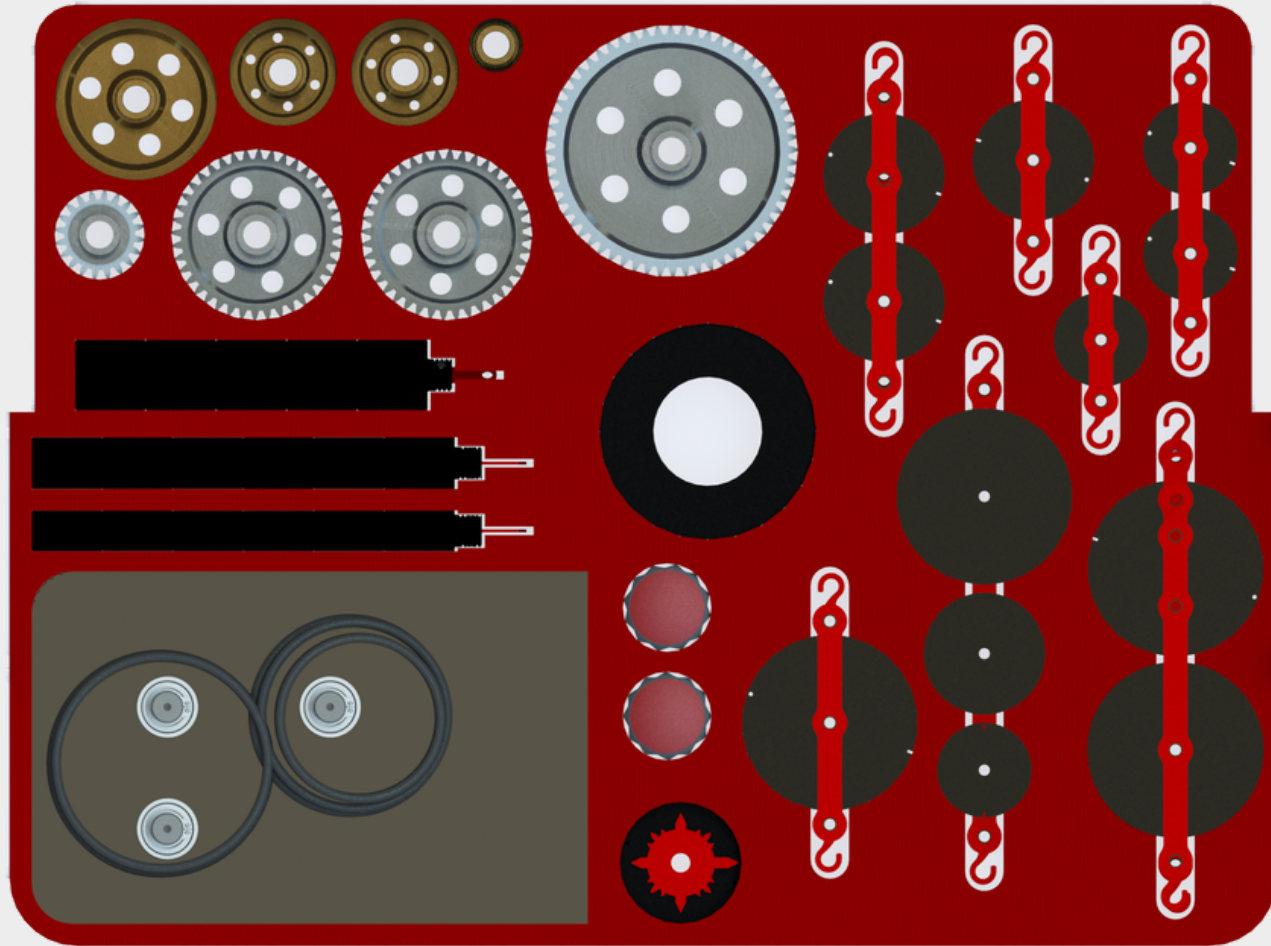
The package of the springs that are kept in, allows users to make hydraulic experiments as well.





SAMPLE ALUMINIUM CASE DESIGN





Moment Equilibrium

Moment bar - 1 piece

Fulcrum - 1 piece

Hanging Base - 1 piece

Pulleys

Rod - 5 types x 4 pieces

1 type x 8 pieces

Pulley - 13 types x 1 piece

3 types x 3 pieces

Gear Wheel - Belt Pulley.

Gear Base - 1 pc.

Gear extender base - 1 pc.

Gear floor base - 1 pc.

Angular pulley - 3 pcs.

Belt - 5 types x 1 pc.

Flywheel - 1 pc.

Axis extender - 3 pcs.

Gear - 40 teeth x 2 pcs.

20 teeth x 1 pc.

60 teeth x 1 pc.

Belt pulley - 40 dia. x 2 pcs.

20 dia. x 1 pc.

60 dia. x 1 pc.

Rope spool - 40 m.

Tool Box - Chrome pin - 45 pcs.

Screw - 10 pcs.

Butterfly nut - 3 pcs.

Rubber stabilizer - 50 pcs.

Metal ruler - 1 pc.

Weight - 25 gr. x 6 pcs.

50 gr. x 6 pcs.

100 gr. x 5 pcs.

250 gr. x 3 pcs.

750 gr. x 1 pc.

Inclined Plane

Inclined plane tray - 1 piece

Angular sheet - 2 pieces

Angle adjusting nut - 2 pieces

Friction surface - 4 types x 1 piece

Spinning wheel - 1 piece

Springs - Hard - 6 pieces

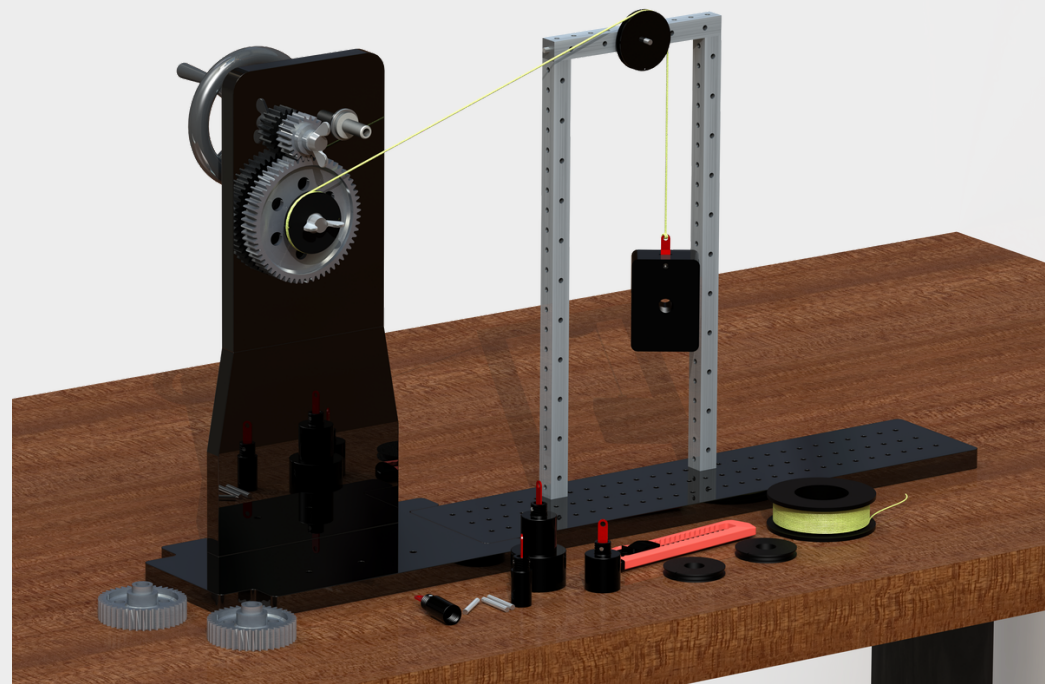
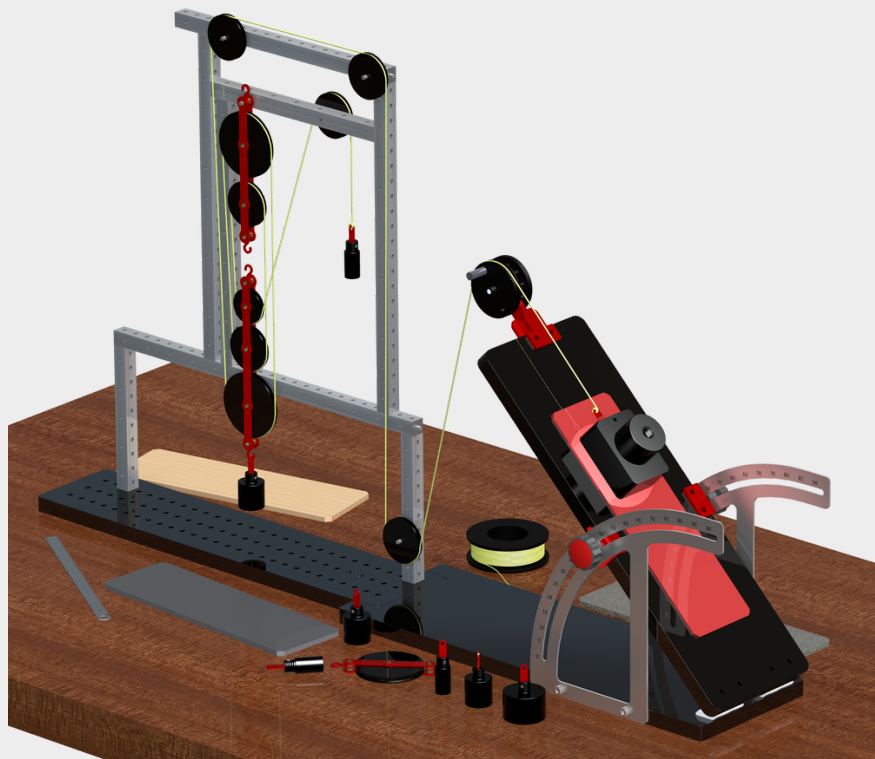
Medium - 6 pieces

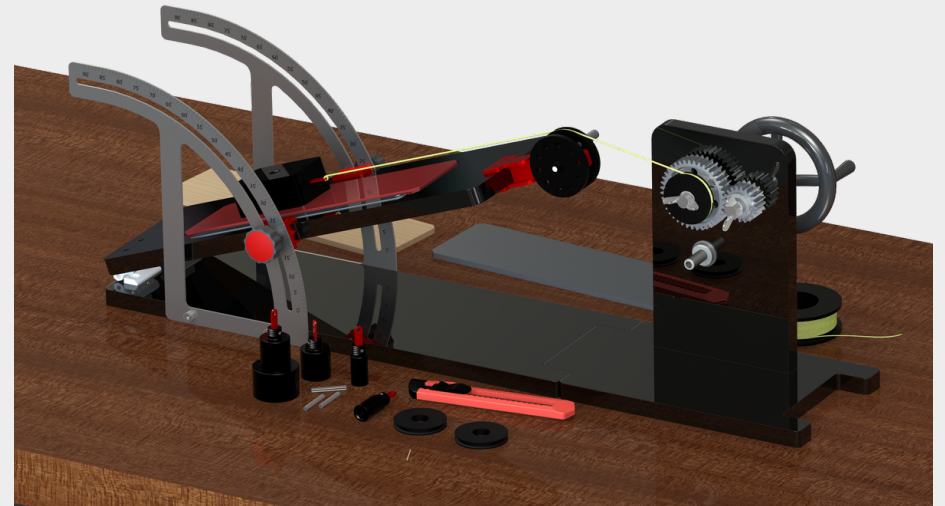
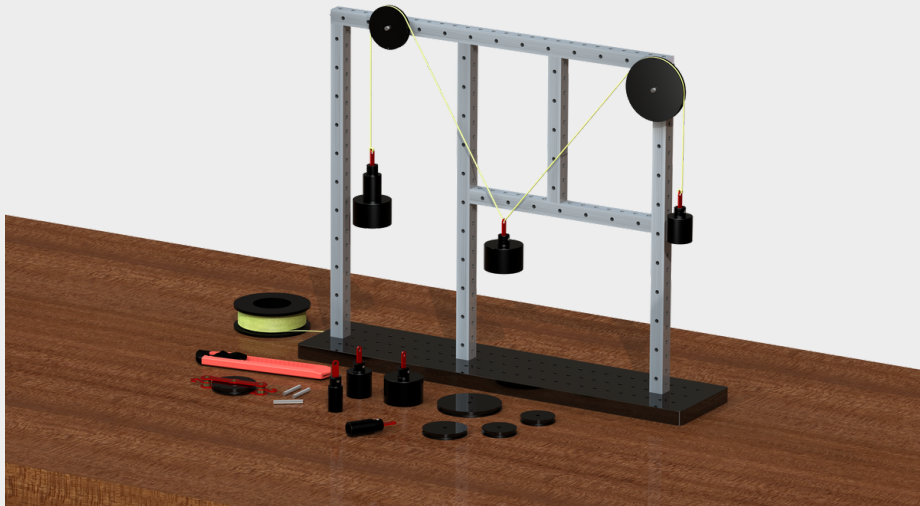
Soft - 6 pieces

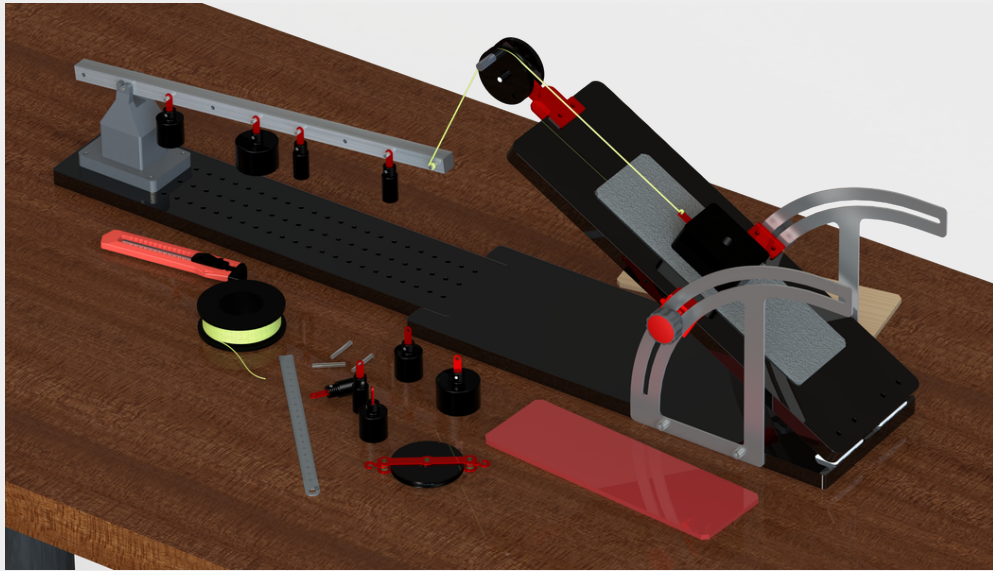
Hangers - 1 type x 20 pieces

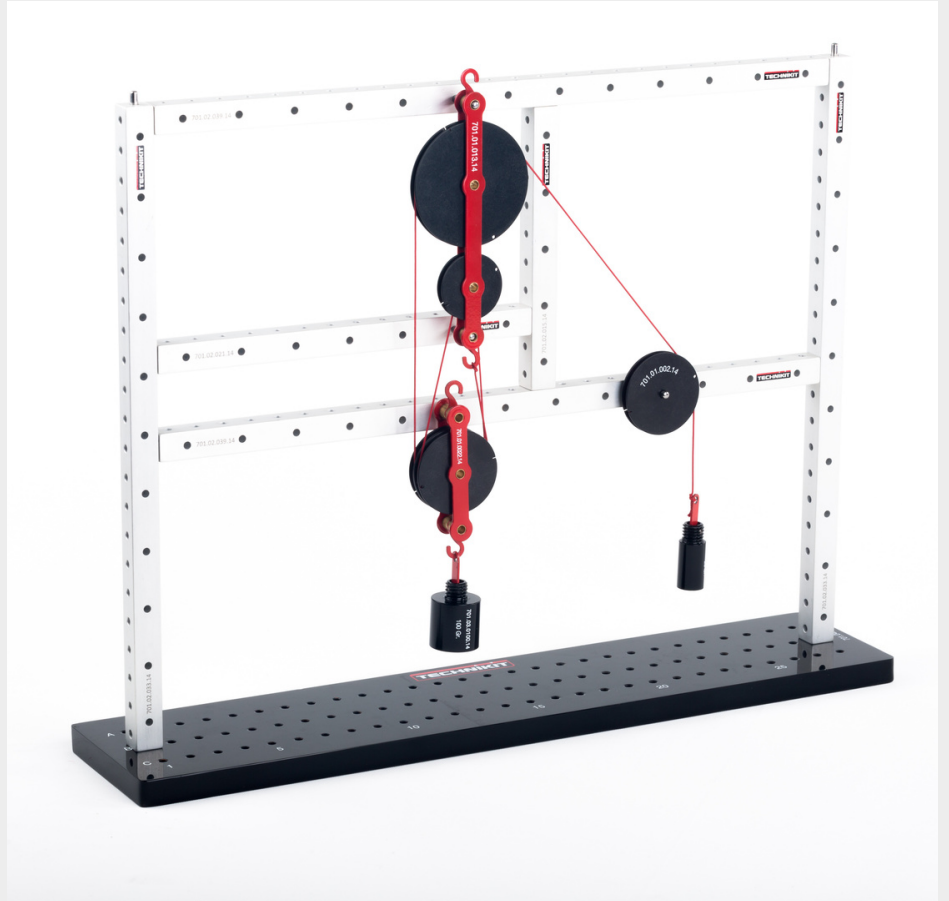
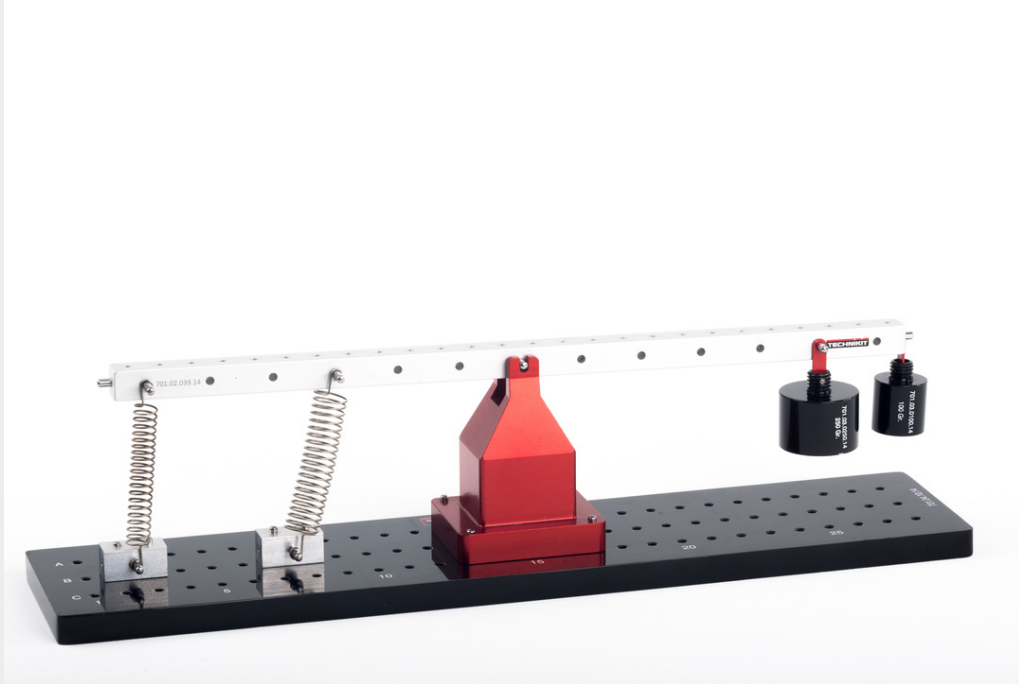
1 type x 10 pieces

Total: 265 pieces!

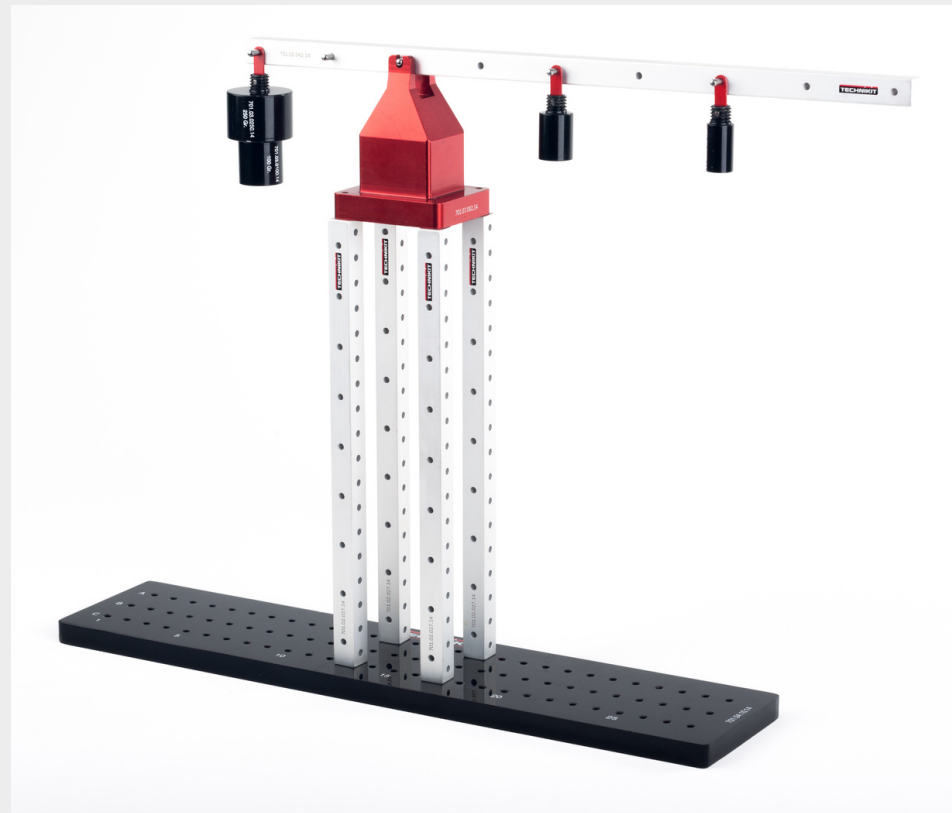
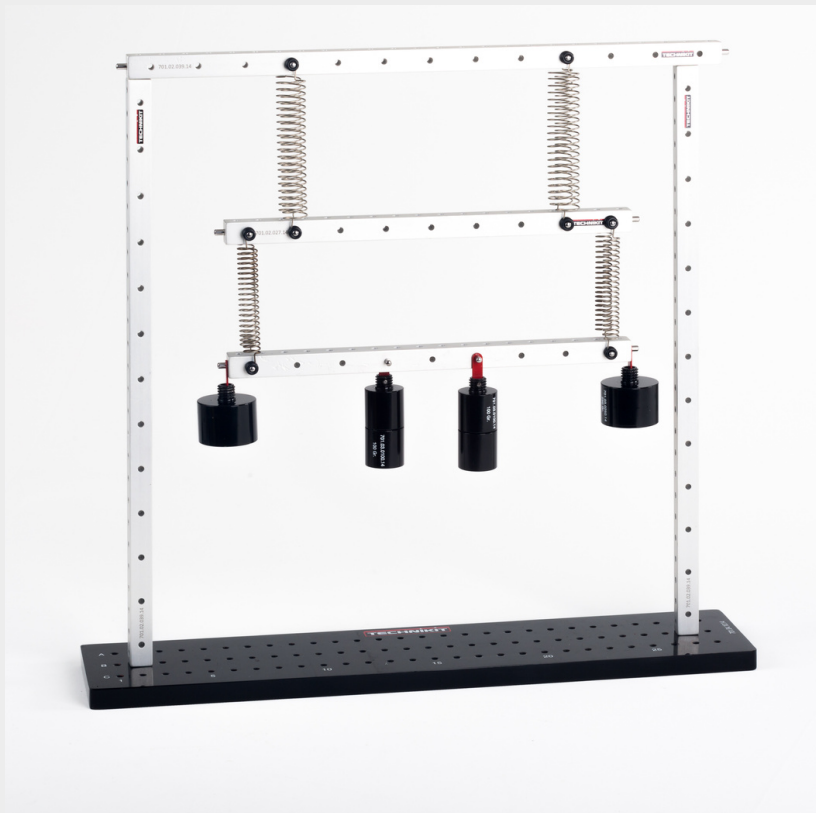
















+90 212 2761298

www.technikit.com | satis@technikit.com

**Maltepe Mah. Gümüşsuyu Cad. No:58/35
Zeytinburnu / İstanbul Türkiye**